

MONTHLY MEMBERSHIP PROGRESS REPORT

District 27 D1

Results as of: 5/31/2020

GMT:

LOCATION WISCONSIN

GMT CA

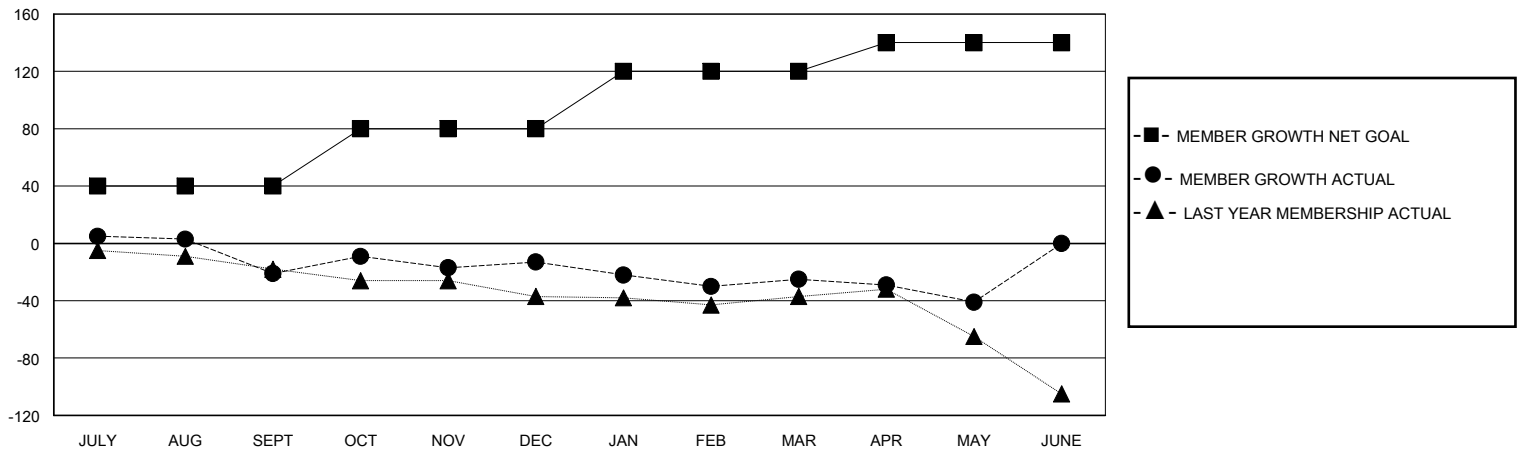
Clubs			
RESULTS FOR 2019-2020			
QUARTER	NEW CLUB GOAL	NEW CLUBS	DROPPED CLUBS
JULY/AUG/SEPT	0	0	0
OCT/NOV/DEC	0	0	0
JAN/FEB/MAR	1	0	0
APR/MAY/JUNE	0	0	0

Members			
RESULTS FOR 2019-2020			
QUARTER	MEMBER GROWTH NET GOAL	MEMBER GROWTH ACTUAL	DROPPED MEMBERS ACTUAL (including transfers)
JULY/AUG/SEPT	40	43	60
OCT/NOV/DEC	40	47	39
JAN/FEB/MAR	40	31	42
APR/MAY/JUNE	20	11	26

GOALS AND ACTUAL NEW CLUBS CUMULATIVE



GOALS AND ACTUAL MEMBERS CUMULATIVE



DROPPED CLUBS: 0	44 CLUBS OF 58 ADDED 1 OR MORE NEW MEMBERS	GENDER DISTRIBUTION MALE 1,555 (73.18%) FEMALE 570 (26.82%)
DROPPED MEMBERS DECEASED 19 CLUB CANCELLED 0 OTHER 148 TOTAL 167	CLICK HERE FOR CUMULATIVE MEMBERSHIP DATA	TOTAL FAMILY UNIT MEMBERS 448 FAMILY MEMBERS PAYING HALF DUES 226